

Design - Structure Diagram



Structure Diagrams

Structure diagrams are a visual representation of the steps needed to solve a problem.

Structure diagrams are read from the top down, from left to right.

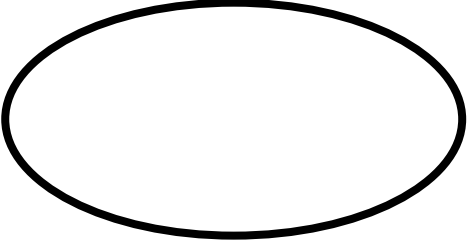

Structure Diagram Symbols

The following symbols are used in structure diagrams:

| Symbol | Name | Use |
|--|----------------------|--|
|  | Process | Used to show that a process is needed (such as user input, a calculation or displaying information) |
|  | Pre-Defined Function | Used to show that a pre-defined function will be used (such as random, round or length) instead of a developer writing the process themselves. |

Structure Diagram Symbols

The following symbols are used in structure diagrams:

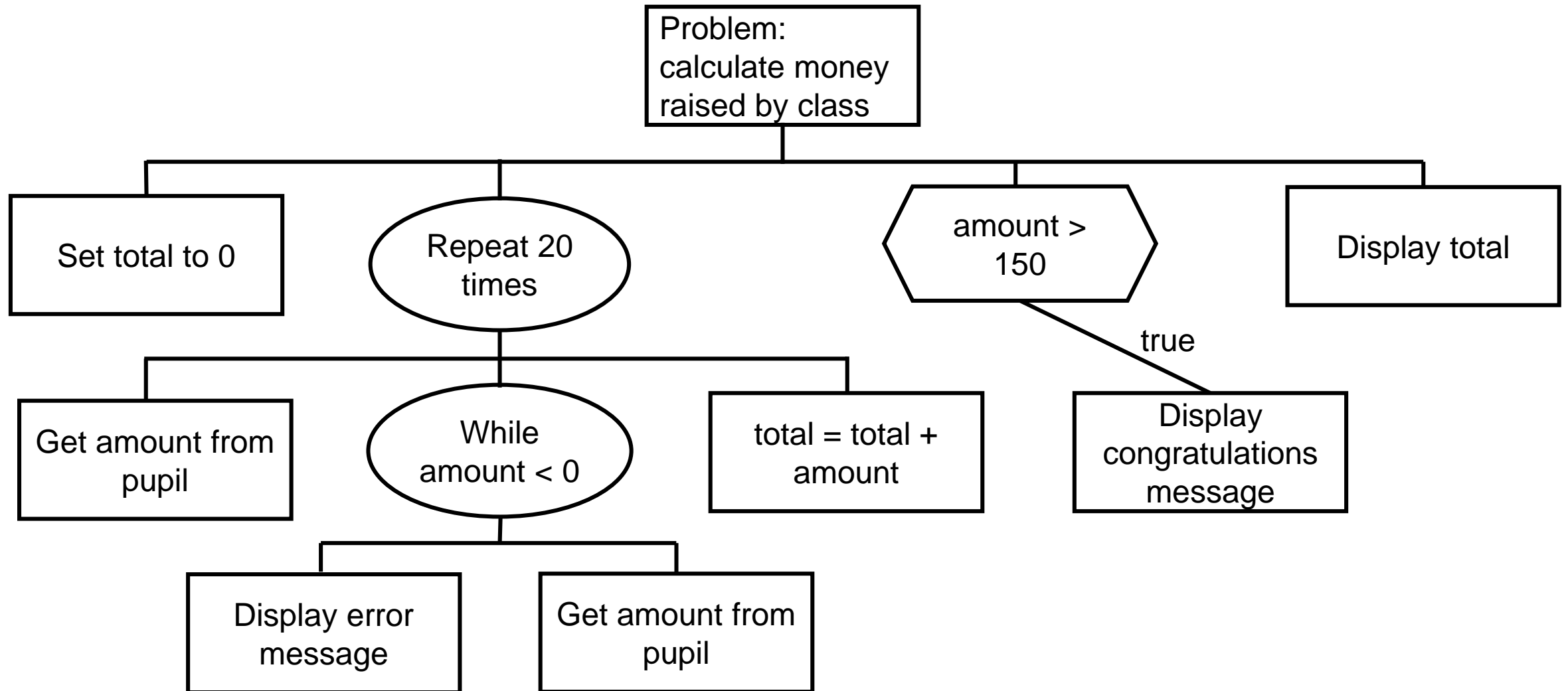
| Symbol | Name | Use |
|--|-----------|---|
|  | Loop | Used to show that code should be repeated. This is used for both fixed and conditional loops |
|  | Selection | Used to show that the program needs to decide which path to follow i.e. different code should be executed for different scenarios |

Structure Diagram Example

Program Purpose:

A class of 20 pupils is raising money for charity. For each pupil, the program will ask how much money they raised, validate that it is a value larger than 0, and then add the amount to the total. When there are no pupils left, the program should decide if the class has won a prize by raising more than £150, displaying a congratulations message if they have. The program will then display the total amount raised.

Structure Diagram Example



Pre-Defined Functions in Structure Diagrams

