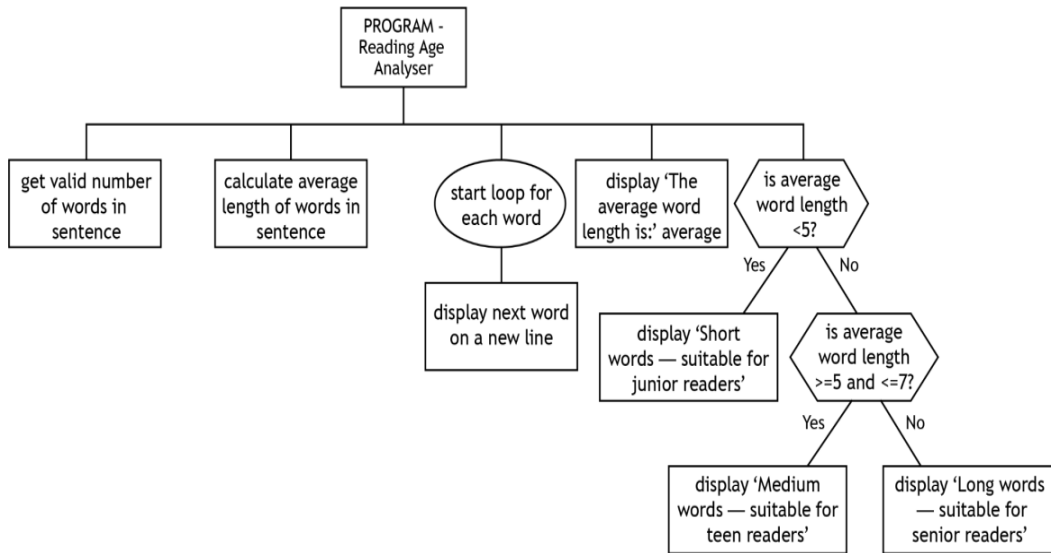


Design



```
1 #SQA Assignment 2020-21
2 #Example Solution
3
4 words=[""]*20
5 totalLength=0
6 NoOfWords =0
7 wordLength=0
8 averageLength =0
9
10 #Input Validation - get valid number of words Max 20
11 NoOfWords = int(input("Please enter the number of words in the sentence"))
12 while NoOfWords < 0 or NoOfWords > 20:
13     NoOfWords = int(input("Invalid - please re-enter. Max 20 words"))
14
15
16 for counter in range(NoOfWords): #Start loop for each word
17
18     #fill the array with words entered from user
19     words[counter]=input("Please enter word " + str(counter + 1))
20
21     #return the length of the word entered
22     wordLength=len(words[counter])
23
24     #keep a running total for total length of sentence
25     totalLength = totalLength + wordLength
26
27 #calculate average word length
28 averageLength = totalLength/NoOfWords
29
30 print("_____")
31
32 #start loop to display each word on new line
33 for index in range(NoOfWords):
34     print(words[index])
35
36 print ("The average word length is " +str(averageLength))
37
38 #determine reading age
39 if averageLength < 5:
40     print("Short words - suitable for Junior readers")
41 elif averageLength >=5 and averageLength <=7:
42     print("Medium words - suitable for teen readers")
43 else:
44     print("Long words - suitable for senior readers")
45
```